



2011

BYC  
RNSYS

---

# 1 Welcome

## 1.1 Welcome Note

Welcome to The Boston Yacht Club and Marblehead. We hope that you enjoy your visit and take advantage of the wonderful things this town has to offer. If there is anything we can do to help you enjoy your stay please do not hesitate to ask one of us.

## 1.2 Volunteers

The Marblehead to Halifax race is run by volunteers who for the last 12 months have been working tirelessly to ensure that you have a successful race. They will be wearing identification badges, please be sure to treat them with respect as we need them to volunteer again for the next race!

# 2 Social Calendar

## 2.1 BYC

The BYC social calendar is attached as an appendix to this document. Events that are marked "wristband" are included in the wristband fee. Wristbands can be purchased by racers for \$70 from registration. The wristband fee includes events to be held in Marblehead and Halifax. For events that are not included in the wristband (July 9<sup>th</sup> tent party), reservations can be made through the front desk until the Hospitality Desk opens on July 7<sup>th</sup>. Tickets for Saturday Dinner can be purchased by credit card (or BYC member charge) and picked up at Hospitality in the BYC Main Lounge.

## 2.2 Marblehead

The Marblehead Festival of Arts will be held in Marblehead from July 1<sup>st</sup> to July 4<sup>th</sup>. The festival has live music, arts & crafts exhibition and street festival. Full details can be found at <http://www.marbleheadfestival.org>

## 2.3 July 4th Fireworks and Illuminations

The Harbor Illumination will commence at approximately 8:45pm and fireworks will be launched from a barge at the mouth of the harbor at approximately 9:00pm. Details can be found at [www.marbleheadfireworks.org](http://www.marbleheadfireworks.org).

# 3 Customs

## 3.1 Overview

US Customs and border patrol will be located in the yardarm, and will be able to clear boats into the US. Instructions can be found on the website <http://www.marbleheadtohalifax.com/Race/Customs/CustomsInformation.htm>

### **3.2 Hours**

In past years the customs agent has been at the BYC twice per day between 10:30am-12:00pm and 6:00pm-8:00pm.

## **4 Waterfront**

This is a busy time for our waterfront staff. You are welcome to use our facilities but please take direction from our Dockmaster – Ken Breen – and his staff.

Visiting yachtsmen can purchase “Waterfront Service” for \$30/night to a max of \$100. The fee covers mooring, launch service, and short term docking for water & fuel. These fees can be paid at registration. Yachts that have paid the fee will be issued with an identification pennant that must be flown from their backstay. The Waterfront will only provide service to boats that fly the identification pennant.

### **4.1 Moorings**

4.1.1 It’s going to be a busy few days in the Marblehead Harbor. As always, we have a small team working hard to accommodate everyone in Marblehead Harbor. The following should help explain the process of securing a mooring.

4.1.2 If you have registered for the race, and paid, and checked the box “mooring required” then you are on our list of boats that we are trying to accommodate.

4.1.3 Once you know your approximate ETA in Marblehead please email our Dock Master Ken Breen [kenbreen@bostonyachtclub.net](mailto:kenbreen@bostonyachtclub.net) to let him know. Please include the name of your boat, it’s approximate length and draft. Ken will acknowledge your email with a brief reply if you are already on his list.

4.1.4 When you are 60 minutes from Marblehead please call the club and ask to be put through to the dock house to let them know you are on your way. If you arrive “out of hours, (after 11pm and before 8am), pick up a vacant mooring at the mouth of the harbor and wait for the world to wake up! If there are no moorings you can make your way to the BYC and tie up to the North end of the dock.

4.1.5 On your final approach to the Harbor hail the BYC on channel 68 and someone will direct you to a mooring.

4.2 The registration desk will be open from Thursday onwards, and you will need to pay your harbor service fee (\$30/night, \$100 max) at registration.

4.3 Boats will be rafted; if you do not want to be rafted you will need to find a mooring in Salem Harbor. The two companies that you can contact are Mid Harbor Marine 781 631 0655 or Salem Water Taxi (978) 740-9989. Please note that the BYC does not offer launch service to Salem Harbor

#### **4.4 Launch Service**

Launch Service will be available Wednesday, July 6th thru Saturday, July 9th - 7:00am to 12:00pm. Sunday, July 10th - 6:30am to 11:00pm

#### **4.5 Fuel & Water**

Fuel and water is available at the BYC dock. The Fuel dock will be 8:00am to 6:00pm daily (CLOSED Sunday morning during "Race Rush").

### **5 Registration**

#### **5.1 Location**

The registration desk is located in the yardarm building.

#### **5.2 Hours**

Thu 9-5, Fri 9-5, Sat 8:30-10

Sat 1-3 (for unfinished business and corrections following skippers meeting)

#### **5.3 Check In**

Check in will be completed upon submission of all required documents including but not limited to those listed below, and payment of the following fees:

5.3.1 2011 Final Crew List signed and dated by yacht Person in Charge

5.3.2 Safety and Inspection Checklist completed by Person in Charge

5.3.3 Outstanding required documents, i.e. applicable racing certificate, experience of yacht and crew.

5.3.4 Payment of applicable fees;

5.3.4.1 *Harbor Services Fee*

5.3.4.2 *Transponder Deposit*

5.3.4.3 *Wrist Bands - Underage Identifier Form*

5.3.4.4 *Gear Transport Fee*

### **6 Ship's Locker**

#### **6.1 Location**

Race merchandise can be purchased through the Ships Locker, which is located under the tent during the day and will be in the BYC Clubhouse Main Lounge (1<sup>st</sup> Floor) some evenings.

#### **6.2 Hours**

Weds 12-8, Thurs 8-8, Fri 8-8, Sat 8-6, Sun 7-11

## **7 Shipping Gear**

### **7.1 Overview**

MHOR committee will provide a trailer for shipping gear to Halifax and back. The trailer will be located outside the gates of the BYC. The trailer will leave the BYC on Sat July 9<sup>th</sup> and will be in Halifax by Tue July 12<sup>th</sup>. The return trip will leave Halifax on July 14<sup>th</sup>.

### **7.2 When can I load gear?**

The trailer will be available for loading during the following times. Thurs 2-4 Fri 11-4, Sat 10-2. The trailer will be hauled away shortly after 2 pm, so this is a real deadline. Outside of these hours please check the trailer as there may be a cell number that you can call.

### **7.3 What is the cost?**

We will charge a flat fee of \$300 to Halifax and \$150 return for a “reasonable” load. The test of reasonableness is at the discretion of the person loading the trailer. Please pay for your load at the Registration Desk.

### **7.4 What forms do I need?**

The customs forms are available on the MHOR website. In past races the trailer nearly got turned back at the border because some of the paperwork was incomplete. You will not be able to load your gear until your paperwork is complete and the fee has been paid.

### **7.5 See <http://marbleheadtohalifax.com/Race/GearTransport.htm> for complete details.**

## **8 Showers and Head Locations**

**8.1 There are three locations where you can find showers and heads. The yardarm building at the BYC has two shower and head units. A trailer located in the dry sail area will have three showers. The Harbormaster’s building at Tuckers Warf (between BYC and The Landing Restaurant) has showers and heads.**

## **9 Hospitality**

### **9.1 Overview**

A Hospitality Desk will be located adjacent to the Front Desk in the main clubhouse of the BYC. The purpose of the desk is to offer assistance to visiting yachtsmen.

### **9.2 Hours**

Thursday 12-6pm, Friday 9-6pm, Saturday 9-6pm+, Sunday 8-11

### **9.3 Other services**

## **9.4 Laundry**

We will provide a laundry service that can be dropped off and picked up at the Hospitality Desk. The cost of the service will be based on weight.

## **9.5 Internet Access; The BYC provides free public WIFI access in and around the club.**

## **9.6 Propane**

A re-charging service will be provided once per day – ask the Hospitality Desk for details.

## **9.7 Race Concierge**

In the run up to the race we have been offering a “Race Concierge” program to make your visit to Marblehead run more smoothly. We are unsure how much of this personalized service we can offer in the days before the race, but if you need some personal assistance to make your visit run more smoothly please email Chris Ann Goddard [chris@cgprpublicrelations.com](mailto:chris@cgprpublicrelations.com).

# **10 In-town transportation**

## **10.1 Overview**

We will provide a number of drivers and their cars to help you run errands around town upon special arrangements with the OOD.

## **10.2 Limits of travel**

This service is predominantly for in-town transportation but other requests may be accommodated at the discretion of the driver.

## **10.3 How to book a driver**

If you would like a ride please approach one of the officers of the day (OODs will make arrangements), or ask at the Hospitality Desk.

# **11 Use of club facilities**

## **11.1 Overview**

We welcome visiting yachtsmen to our club and hope that you can enjoy the facilities during your visit to Marblehead. To help ensure that you maximize your enjoyment please follow these guidelines.

### **11.1.1 Credit Card Use**

If you would like to charge meals and drinks to your credit card you may now use those at all our bars and dining. You will need either wristbands or tickets for Friday and Saturday night dinners.

### **11.1.2 Use of bar**

The outside bar will be open most of the time, and this will be a cash and credit card bar. If you want to make use of our inside bar you will need to use credit cards only.

### **11.1.3 Booking dining**

Our restaurant will not be open every night, depending on the other functions that are underway at the time. If you would like to book a table in the clubhouse for dinner you can do so at the front desk (please be sure to have your credit card).

## **12 Parking**

### **12.1 It's an issue!**

The BYC has very limited parking and we cannot offer space at the club for visitors. All cars that are parked in the BYC parking lot must either have a parking sticker, or a temporary parking pass. All other unattended vehicles will be towed.

### **12.2 Drop Off**

Vehicles will be given access to the BYC parking lot to pick up and drop off loads. During busy periods the drop off will need to happen at the front gate.

### **12.3 Short term parking**

There are two short term parking facilities that have been made available to BYC members and MHOR visitors. You cannot park overnight at either of these two lots. The Old North Church Lot (see map) is available for daytime use (except Sunday), and the Marblehead Bank (see map) lot is available outside of business hours.

### **12.4 Long term parking**

Long term parking is available at the high school (see map). Parking is also available at Little Harbor in the lot near the office building.

## **13 Tipping "101"**

The town of Marblehead loves to have the racers in here, but sometimes the folks that wait on us in the local bars and restaurants are less excited and here is why.: in the U.S. it's common practice for waitstaff to earn an hourly wage that is well below the minimum wage, and they rely on their tips to give them a decent "take home" pay. It's customary to tip somewhere between 15% - 20% for good service.

## **14 Viewing the Race**

The race start area is attached as an appendix. If you do not have access to a boat there will be a limited number of spaces on the spectator boats. You can sign up at the Registration Desk.



## SCHEDULE OF SOCIAL EVENTS – MARBLEHEAD

Friday, July 8 2011

Friday, July 1 -- Monday, July 4th 2011

All Day

[Marblehead Festival of the Arts](#)

The Festival has live music, arts & crafts exhibitions, writing, performing arts, competitions, model boat building and much more. For more information visit <http://www.marbleheadfestival.org>

On your own

See the sights of Marblehead

(get info at Hospitality desk about the various attractions and comfortable walking directions)

730 - 1000

Continental Breakfast (**wristband required**)

900 - 1700

Race Registration & Check-in in the BYC Yardarm

1200 - dusk

BYC Gazebo open for Drinks, Grill and Great Food (hmm, a lobster roll today)

1430 - 1630

Wine Tasting under the Tent - open to all (of legal drinking age)

1730 - 1930

Gosling's 'Dark & Stormy' Open Bar - (**wristband required**)

1900 - 2330

Sailor's Buffet and Party with Band 'Night Flight' (wristband required)

Saturday, July 9 2011

730 - 1000

Continental Breakfast (**wristband required**)

Saturday, July 2 2011

1800

Race Entry Deadline

Thursday, July 7 2011

900 - 1700

Race Registration & Check-in in the BYC Yardarm

930 - 1500

Shopping & General visit to Boston

(sign up at Hospitality desk - space limited, minivan leaves BYC 9:30am prompt)

1200 - dusk

BYC Gazebo open for Drinks, Grill and Great Food (have a burger)

1800 - 2100

Dining Room open for dinner to Racers

**830 - 1000**

**Race Registration & Check-in in the BYC Yardarm**

**1200**

**Skipper's Meeting under the Tent**

**1200 - dusk**

**BYC Gazebo open for Drinks, Grill and Great Food (try the grilled chicken)**

**1900 - 2230**

**'Summer BBQ' Buffet with Band 'Better Than Nothing'  
(NOT included in wristband - reservations and tickets available at Hospitality Desk)**

**Sunday, July 10 2011**

**700 - 1000**

**Racers' Full Breakfast (**wristband required**)**

Wristbands are available to skippers and crew. They can be purchased at onsite registration for \$70 each. They cover the items listed here and a similar number of items in Halifax – see the website for Halifax schedule.

## **MHOR 2011 - Preferred Restaurants**

(Kindly support those on this list who have supported MHOR 11)

### **Sandwiches & Pizza**

#### **Evans Deli**

31 Smith Street, Marblehead  
781-631-3354

#### **Foodies Feast**

114 Washington Street, Marblehead  
639-1104

### **Coffee, Breakfast & Lunch**

#### **Atomic Café**

14 School Street, Marblehead  
781-631-6464

#### **Foodies Feast**

114 Washington Street, Marblehead  
639-1104

### **Restaurants & Pubs**

#### **Finz Seafood Restaurant**

76 Wharf Street, Salem  
978-944-0000

#### **Maddie's Sail Loft**

15 State Street, Marblehead  
781-631-9824

#### **The Landing**

81 Front Street, Marblehead  
781-631-1878

#### **Three Cod Tavern**

114 Pleasant Street, Marblehead  
781-639-3263

#### **Evans Deli**

31 Smith Street, Marblehead  
781-631-3354

## **MHOR 2011 - Preferred Provisioning**

(Kindly support those on this list who have supported MHOR 11)

### **Food/Provisioning**

#### **Foodies Feast**

114 Washington Street, Marblehead  
639-1104

#### **Evans Deli**

31 Smith Street, Marblehead

### **Spirits**

#### **Haley's**

114 Washington Street, Marblehead  
631-0169

MHOR Sponsors: Goslings, Barerfoot wine,  
Starborough wine, Red Rock wine, Redwood Creek

## **MHOR 2011 - Preferred Accommodations**

(Kindly support those on this list who have supported MHOR 11)

### **Local Accommodations**

#### **17 Chestnut Street**

17 Chestnut Street, Marblehead  
781-631-0941  
[www.17chestnutstreet.com](http://www.17chestnutstreet.com)

#### **Clipper Ship Inn**

40 Bridge Street, Salem  
978-745-8022  
[www.clippershipinn.com](http://www.clippershipinn.com)

#### **Darci's Parkside Inn**

4 Wyman Road, Marblehead  
781-631-5733  
[www.dpinn.com](http://www.dpinn.com)

#### **Harborside House**

23 Gregory Street, Marblehead  
781-631-1032  
[www.harborsidehouse.com](http://www.harborsidehouse.com)

#### **Pheasant Hill B&B**

71 Bubier Road, Marblehead  
781-639-4799  
[www.pheasanthill.com](http://www.pheasanthill.com)

### **Gift Shopping**

#### **F.L. Woods Nautical Supplies**

76 Washington Street  
781-631-0221

#### **Hestia Creations, Inc.**

13 Hawkes Street, Marblehead  
781-639-2727

#### **Marblehead Outfitters**

112 Washington Street, Marblehead  
781-631-4660

#### **Scribe**

84 Washington Street, Marblehead  
781-631-7274

### **Florist**

#### **Flores Mantilla**

164 Washington Street, Marblehead  
631-9483

## **MHOR 2011 - Preferred Suppliers**

(Kindly support those on this list who have supported MHOR 11)

### **Real Estate**

**Harborside Realty**  
72 Front Street, Marblehead  
781-631-3302

**The Forepeak**  
89 Front St, Marblehead  
781-631-7184

### **Banking & ATM**

**Marblehead Bank**  
21 Atlantic Avenue, Marblehead  
781-631-5500

**Brewer's Hawthorne Cove Marina**  
Hawthorne Cove  
10 White St.  
Salem, MA  
978-740-9890

### **Sail Makers**

**Doyle Sailmakers, Inc.**  
89 Front Street, Marblehead  
781-639-1490

### **Hardware**

**Green's Ace Hardware**  
70 Atlantic Avenue, Marblehead  
781-639-2257

**Gilbert & Cole Building Products**  
41 Bessom Street, Marblehead  
781-631-0222

### **Insurance**

**The Burke Insurance Agency**  
18 Brown Street, Salem  
978-741-7810

### **Marine**

**Hansen Marine**  
32 Tioga Way, Marblehead  
781-631-3282

**West Marine**  
32 Atlantic Avenue, Marblehead  
781-639-6451

### **Boat Sales**

**Zurn Yacht Design**  
89 Front Street, Marblehead  
781-639-0678

**C.W. Hood**  
Joe Parker  
781-631-0192

## SCHEDULE OF SOCIAL EVENTS – HALIFAX

### Tuesday, July 12, 2011

- 1200-2400 – Spar Loft Bar Service & Canteen \*
- 1100- Junior Marblehead Race
- 1300 –Junior Marblehead BBQ – Saraguay House, Terrace Room

### Wednesday, July 13, 2011

- 0100-0800 – Spar Loft Canteen Service \*
- 0700-1100 – Spar Loft Breakfast Buffet (hot breakfast included with RNSYS wristband package)
- 1000-1700 - Spar Loft Bar Service \*
- 1100-1500 – Spar Loft BBQ Buffet (included with wristband package)
- 1600-2100 – Pool Party & BBQ with live DJ, Nigel Lutz (included with wristband package)
- 2100-0100 – Dance with live band, “Rasta Gumbo” (included with wristband package)

### Thursday, July 14, 2011

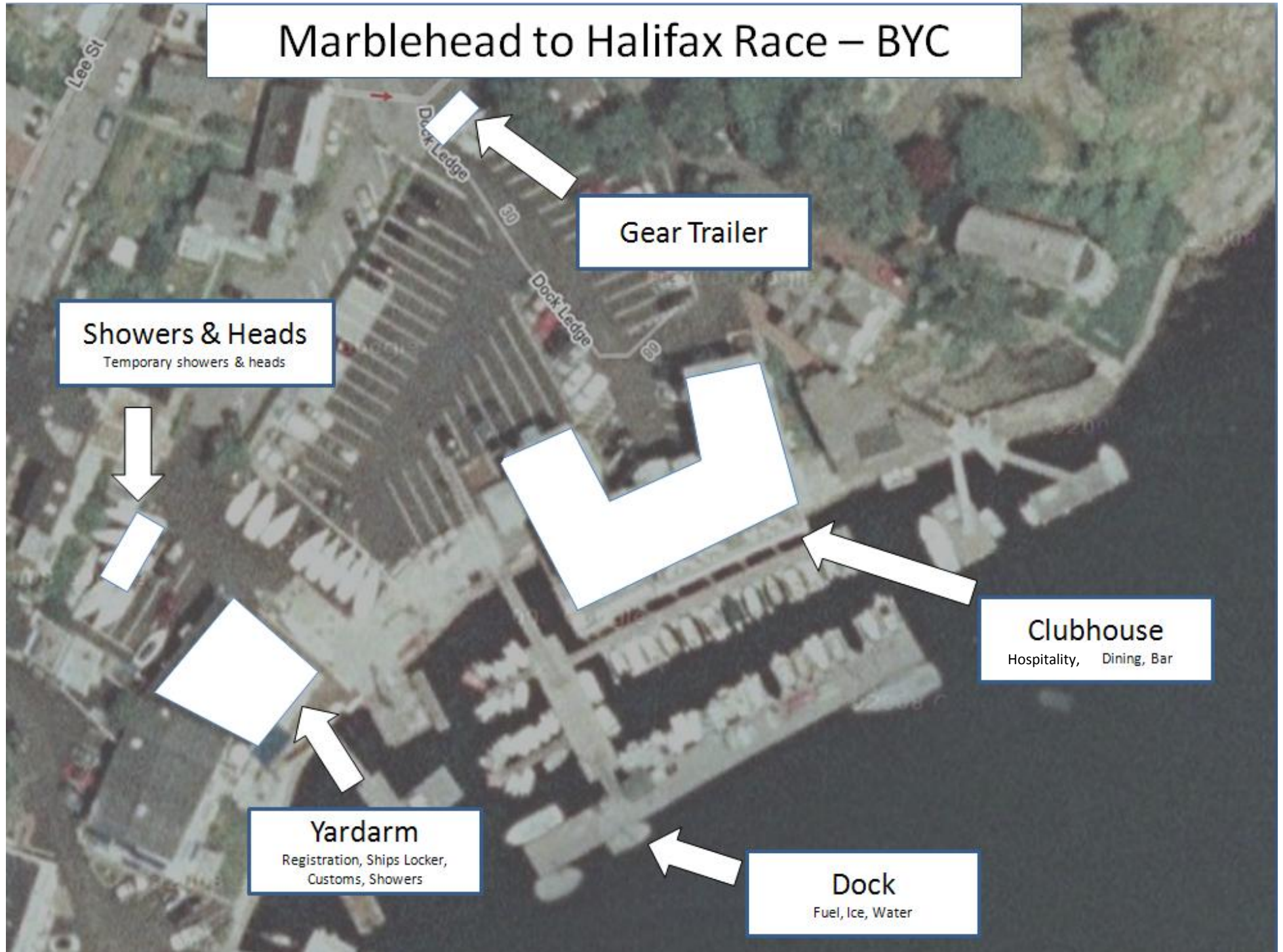
- 0100-0800 – Spar Loft Canteen Service
- 0700-1100 – Spar Loft Breakfast Buffet (hot breakfast included with RNSYS wristband package)
- 1100-1500 – Spar Loft BBQ Buffet \*
- 1530-1800 – Reception for Crew and guests with cash bar...special pricing on pitchers of beer and wings
- 1000-2400 - Spar Loft Bar Service
- 1700-1800 – Prize Giving Ceremony – Saraguay House, Main Level
- 1900-2030 – Buffet Service featuring grilled salmon and roast loin of pork – RNSYS Clubhouse & Spar Loft – Entertainment by “Northern Ramblers” (not included with wristband package)

### Friday, July 15, 2011

- 0700-1100 – Spar Loft Breakfast Buffet (continental breakfast included with RNSYS wristband package)

\*Times subject to change, based on race progress via Yacht Tracker

# Marblehead to Halifax Race – BYC



# Marblehead to Halifax Race – Parking

## Marblehead Bank

Short Term Parking  
No overnight, or Biz Hours

## High School

Long Term Parking  
Available rides back to BYC

## Old North Church

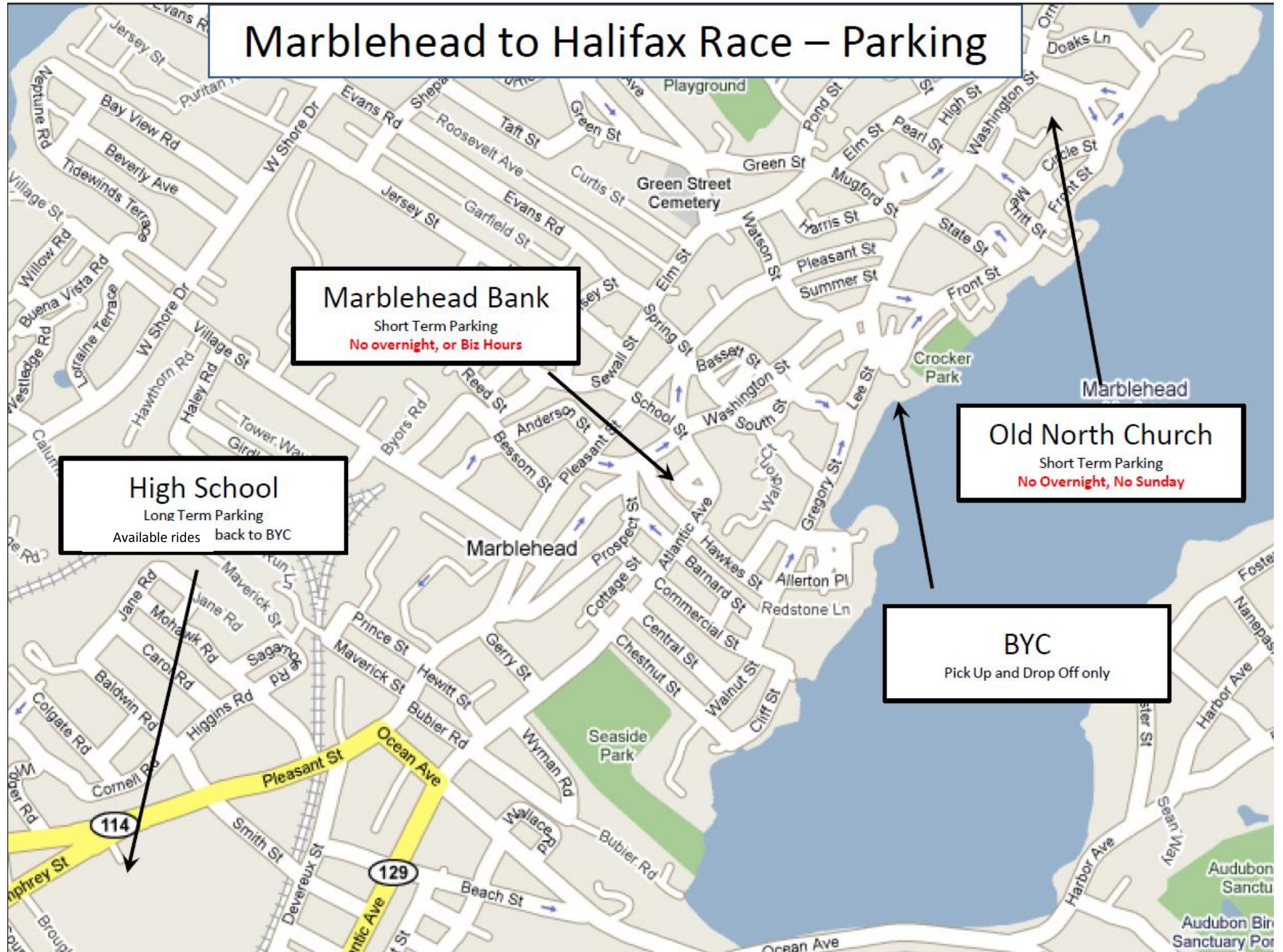
Short Term Parking  
No Overnight, No Sunday

## BYC

Pick Up and Drop Off only

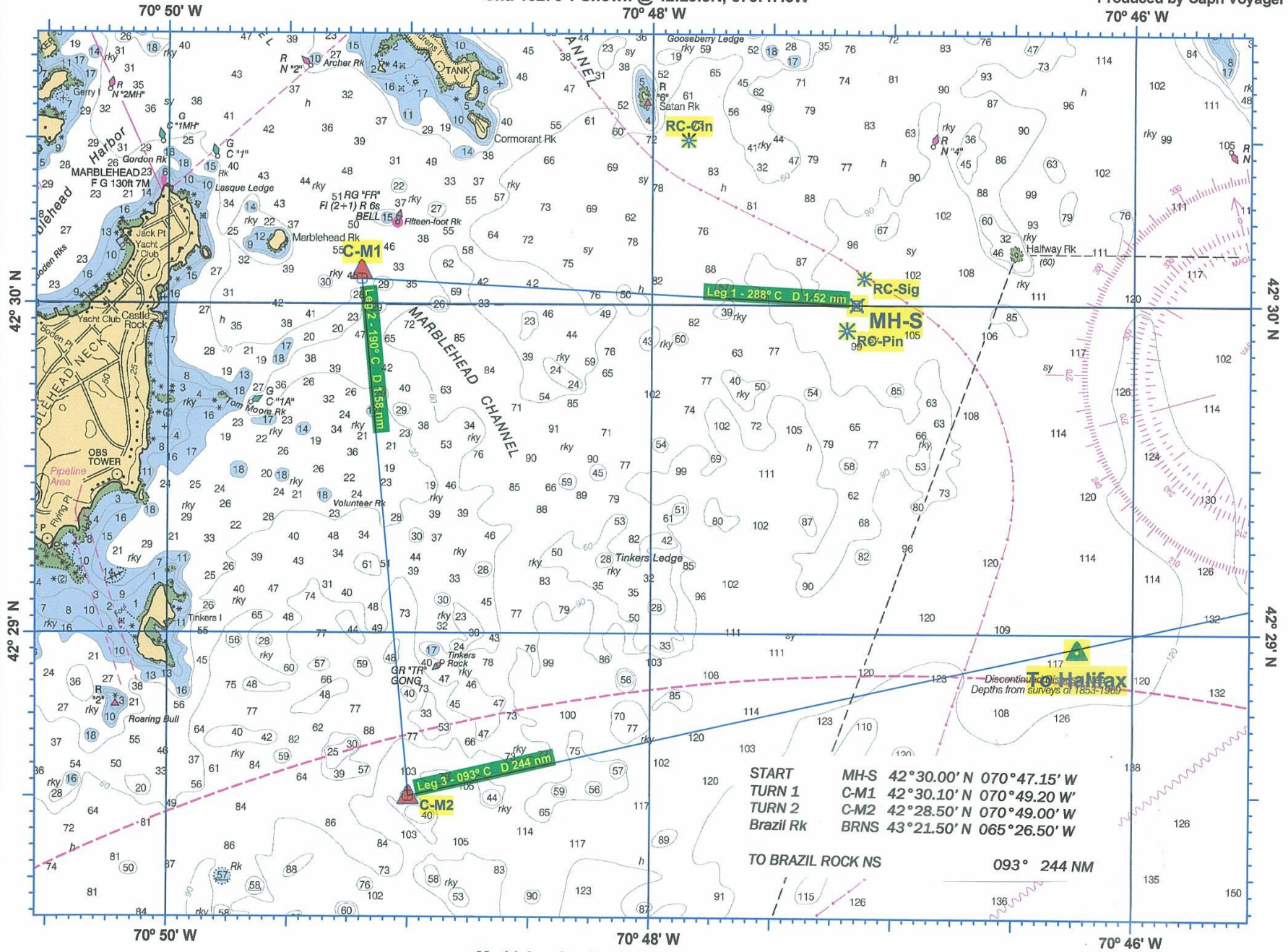
Marblehead

Marblehead



Starting Area and Initial Course  
 Cht. 13276 1 Shown @ 42:29.5N; 070:47.6W

Produced by Capn Voyager  
 70° 46' W



|           |                               |
|-----------|-------------------------------|
| START     | MH-S 42°30.00' N 070°47.15' W |
| TURN 1    | C-M1 42°30.10' N 070°49.20' W |
| TURN 2    | C-M2 42°28.50' N 070°49.00' W |
| Brazil Rk | BRNS 43°21.50' N 065°26.50' W |

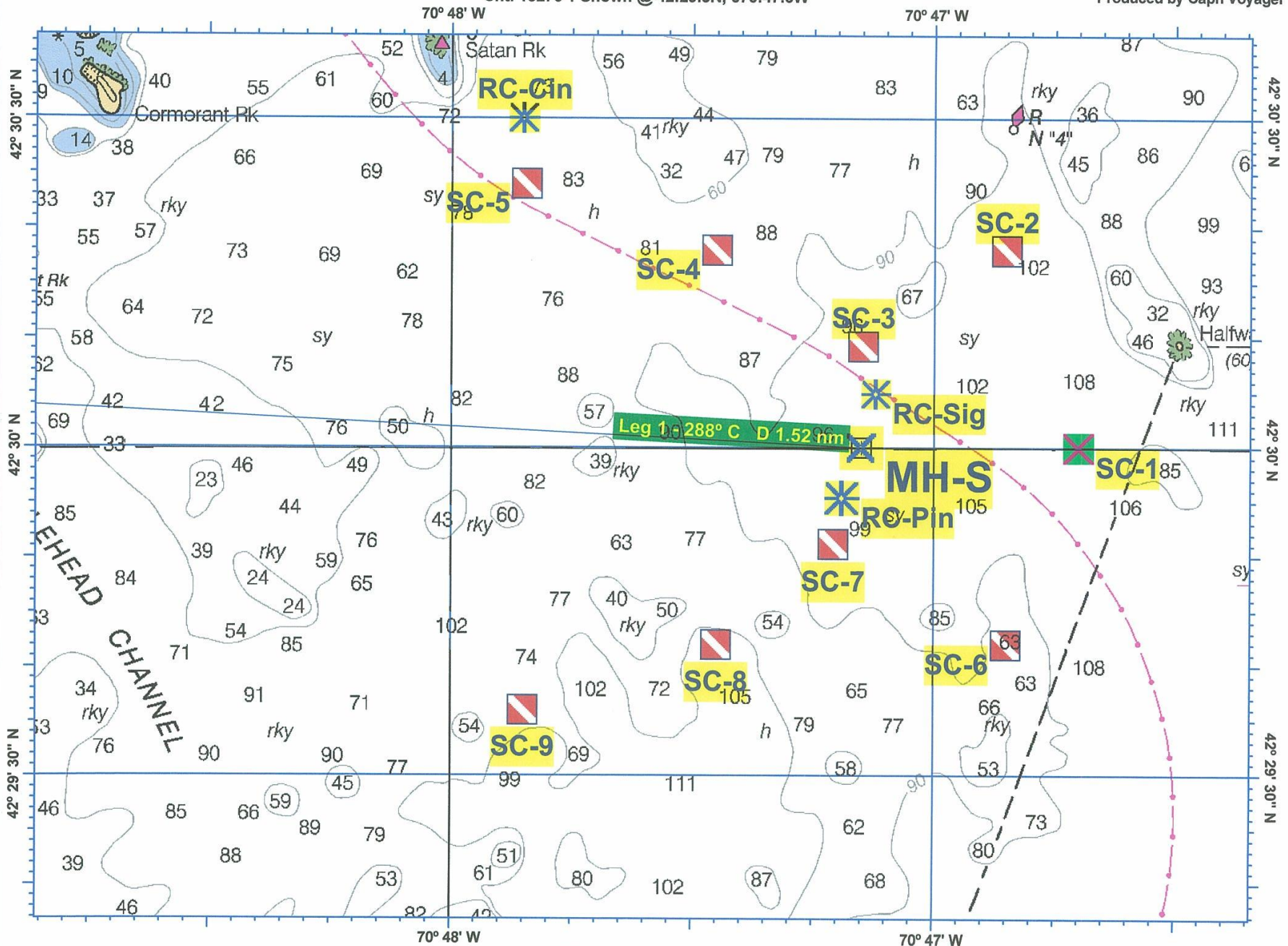
TO BRAZIL ROCK NS 093° 244 NM

Marblehead to Halifax Race Starting Course

# Starting Area Detail

Cht. 13276 1 Shown @ 42:29.5N; 070:47.6W

Produced by Capn Voyager



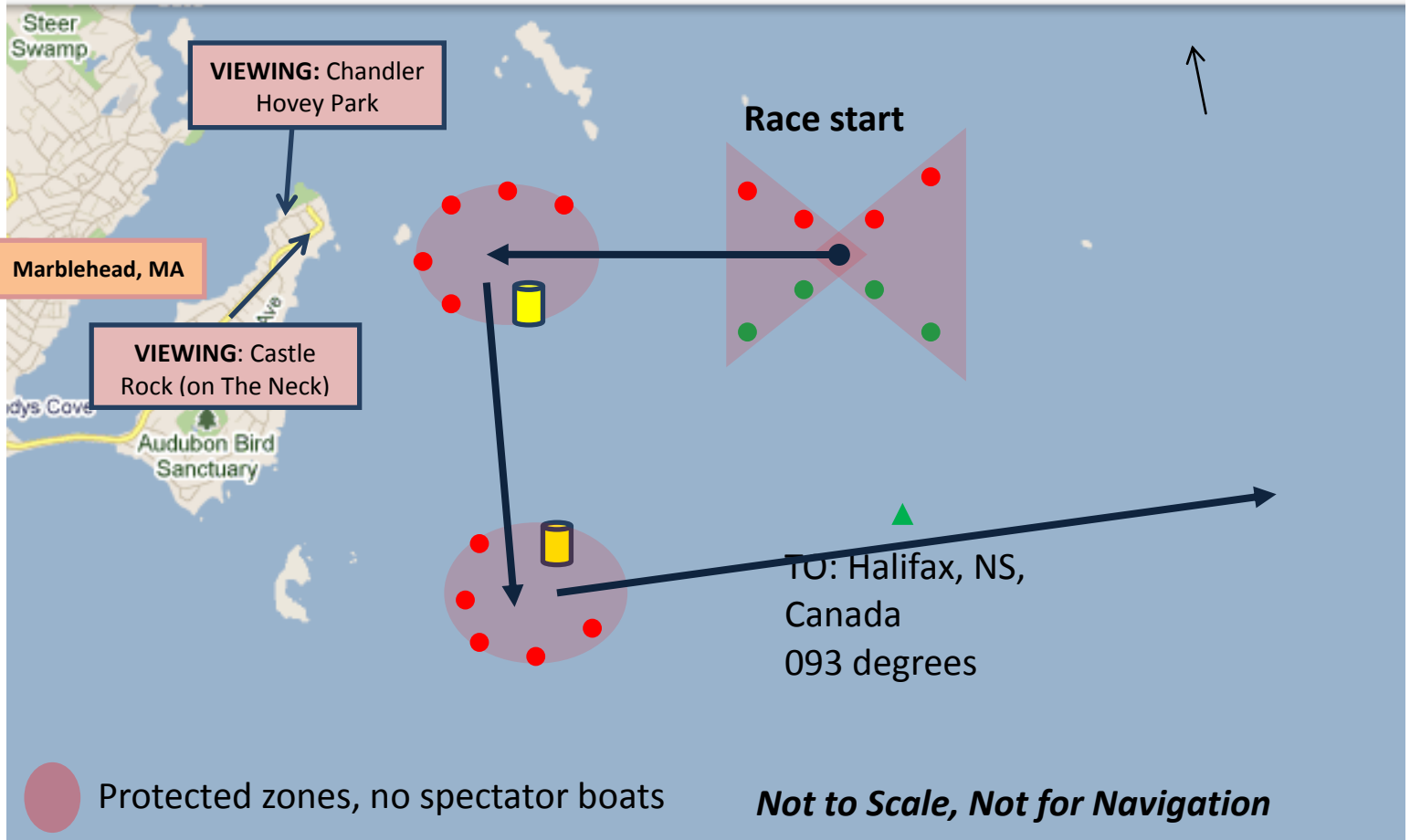
MTH Starting Area Marks



## MARBLEHEAD TO HALIFAX OCEAN RACE 2011

RACE START 1300 hrs – Sunday, July 10, 2011

Spectators - View the race from SHORE or SEA



### Watch from land or from the sea!

**Landside spectators:** great views from Chandler Hovey Park (the lighthouse) and Castle Rock and other great spots.

**Mariners:** come view the spectacle from the water and please *keep clear* of the racing yachts and clear of the **restricted areas** at the start and around each turning mark. Note that the restricted areas (see below) will be marked with floating marks, **red** (north side) and **green** tetrahedrons (south side) defining the start area and **red balls** encircling the turning marks. Each area will be patrolled by multiple Spectator Patrol Boats displaying a Yellow Flag. Please heed their requests to clear the marked areas.

- The start will be SW of Halfway Rock
- Yachts race WNW to MH-M1 turning mark SW of Marblehead Bell (Port rounding)
- Second leg takes racers SSE to MH-M2 turning mark off Tinker's Gong
- Yachts leave MH2 to Port and race to Nova Scotia, Canada